

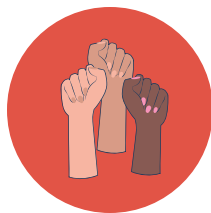
HOW TO COMPLETE YOUR WGS MAJOR

TAKE 4 REQUIRED CORE COURSES

12 units



WGS 200
Introduction



WGS 300GW
Politics of Gender,
Race, & Nation



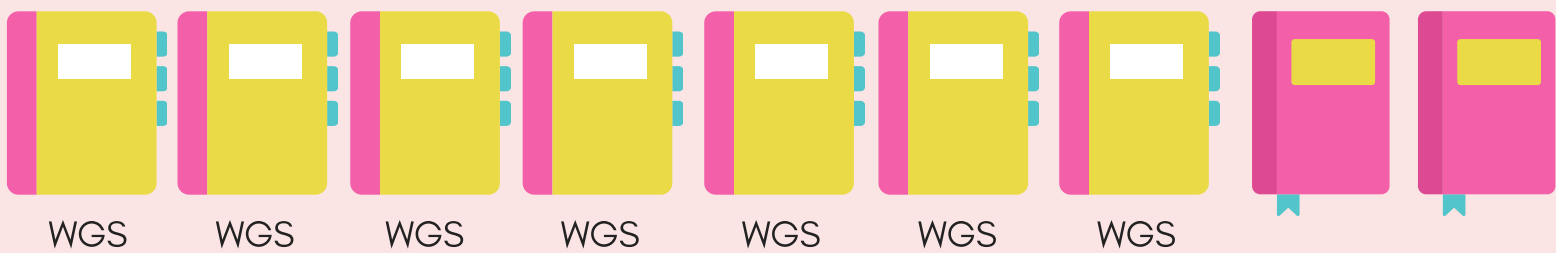
WGS 690
Senior Seminar



WGS 698
Internship

TAKE 9 ELECTIVE COURSES

27 units



Two courses can be taken outside WGS and can be **substituted** from another SFSU department or campus



A maximum of 3 courses may double-count for **General Education** and WGS

12 units



- Maximum 3 Electives can be Credit/No Credit
- All others must be taken for a Letter Grade.

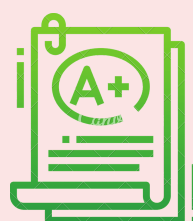
KEEP TRACK OF YOUR PROGRESS



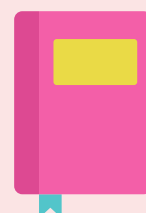
Core Classes



Electives



Grades



Substitutions

How many classes have I taken already?

- 1) Core: _____ 2) Electives: _____
3) Substitutions: _____



How many more classes do I need to take?

- 1) Core: _____
2) Electives: _____

SIGN UP TO TALK TO YOUR MAJOR ADVISOR!